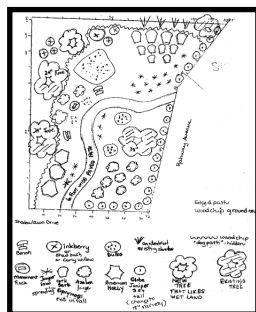


History of Shadowlawn Park

In 1998, the Rake and Hoe Garden Club was interested in planning a touch-and-scent garden at Mindowaskin Park. A Council member asked the club to plan the garden at the Shadowlawn location instead.

Shadowlawn Park belongs to the town of Westfield. It was deemed unsuitable for building a residence because it is too small and because of an underground conduit located on the property.



Original landscape plan 1999

Jennifer Ryan, a local professional architect and member of Rake and Hoe, created a landscape plan. After her untimely death, R&H members Linda Parker and Jeanne Monaghan coordinated the planning. An underground sprinkler system was installed, and a landscaper was hired to plant the first trees and shrubs.

By 2002, Shadowlawn Park had become a reality. The cotoneasters that bordered the sidewalk were removed by the town, and the club planted a willow tree in the low-lying section. Two wooden benches were donated by park neighbors and R&H members Mary Ellen O'Boyle, and Michelle Healy.



Maintenance of the park is now a partnership between the Town of Westfield and the Rake and Hoe Garden Club., whose members and Junior Gardeners prune, plant, and clean-up the site throughout the year.

In October of 2012, Hurricane Sandy roared through New Jersey, taking out the huge, old maple tree, which took down the river birch tree and one of the benches.



Tree damage from Hurricane Sandy



In the spring of 2013, the Juniors planted a Butterfly Garden to attract Monarchs, Swallowtails, and other pollinators. Perennials planted included swamp milkweed, Joe Pye weed, Clethra, and butterfly bush (Buddleia). The Juniors maintain the garden, adding annuals and herbs for variety.



Community Gardens

Shadowlawn Park is located at the corner of Shadowlawn Drive and Rahway Avenue. It is one of four community gardens maintained by the Rake and Hoe Garden Club. The others are:

- ◆ Claire Brownell Memorial Wildflower Garden
- ◆ North Avenue Train Station
- ◆ Miller-Cory House Museum Period Gardens millercoryhouse.org
 - ◇ New Jersey Native Plants & Children's Sensory Garden
 - ◇ Colonial Herb & Vegetable Gardens
 - ◇ Dye & Fern Gardens
 - ◇ Heirloom Trees & Shrubs

Shadowlawn Park Westfield, NJ

Blue Star Memorial Garden Butterfly Garden



The Rake and Hoe Garden Club, Inc. of Westfield, New Jersey

Rake and Hoe Garden Club, Inc. of Westfield, New Jersey

VOLUNTEERS AT SHADOWLAWN



Juniors
The Juniors will be working at the Blue Star garden and will be participating in the ceremony on November 11th. They cleaned the beds and planted mums and cabbages at the garden during our first meeting in October. We now have three first graders as our new members; the older girls will be mentoring them. It was a great time for all. Alice



HISTORY OF THE BLUE STAR MEMORIAL



The Blue Star Memorial Marker was added to Shadowlawn Park and dedicated in a ceremony on November 11, 2011. The memorial project dates back to 1944. At that time, the New Jersey State Council of Garden Clubs beautified a 5½-mile stretch of U.S. 22 from Mountainside to North Plainfield. Approximately 2,000 dogwood trees were planted as a living memorial to the men and women in the Armed Forces from New Jersey.

The National Garden Clubs adopted the project in 1945. By 1951, the memorial tribute included all men and women in service to the United States.

The Blue Star was taken from the service flag used by families during World War II to symbolize that they had a son or daughter in the service.



The dogwood was selected as the featured tree because it is a native of NJ and because of its two seasons of beauty: spring flowering in white, pink, or red and red leaves and berries in the fall.



Today, besides Route 22, Routes 78, 80, 287 and 295 in New Jersey are memorial highways. Across thousands of miles America, including Hawaii and Alaska, garden clubs support Blue Star memorials dedicated to our veterans, in appreciation for their defense of our country.



All photographs used in this brochure were taken by members of the Rake and Hoe Garden Club and may not be used without permission.

Rake and Hoe Garden Club of Westfield New Jersey

Meets monthly, September through May
Contact us at: rakeandhoe.org
April 2020 jdr